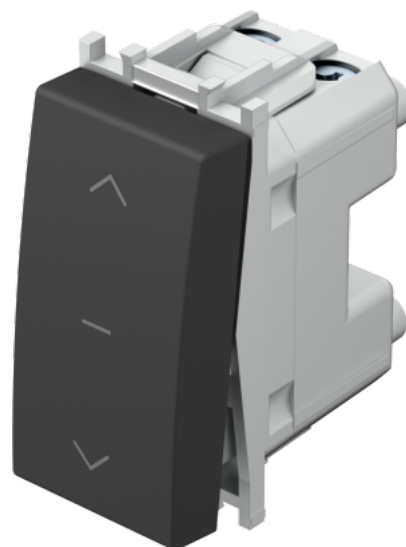


PUSH BUTTON SHUTTERS 1-0-2 16A 250V~ 1M _ NT 10

Product: SM41SBNT10-U
Packaging quantity: 1 PCS
customs tariff number: 85365080

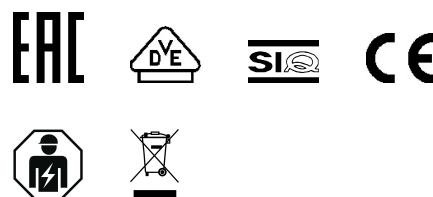
Product description:

- NT 10 neutral 1-0-2
- 16A 250V~, type SM41
- in accordance with EN 60669-1
- screw contacts 1.5-2.5mm²
- replaceable button



ETIM EC class: EC000044 - Venetian blind switch/-push button

PROPERTY	VALUE
Nominal voltage	250 V
Assembly arrangement	Modular device for domestic switching devices
Method of operation	Rocker
Colour	Black
Model	2-pole push button
Connection type	Screwed terminal
Rated current	16 A
Material quality	Thermoplastic
Number of poles	1
Material	Plastic
Type of fastening	Engage (snap)
Number of buttons	1
RAL-number (similar)	9011
Suitable for degree of protection (IP)	IP20



Legal information:

The company TEM Čatež d.o.o. reserves the right to change product features at any time and without prior notice. Data usage terms are available here: https://podpora.tem.si/en/pogoji_uporabe