

PUSH BUTTON 1WAY 16A 250V~ 1M

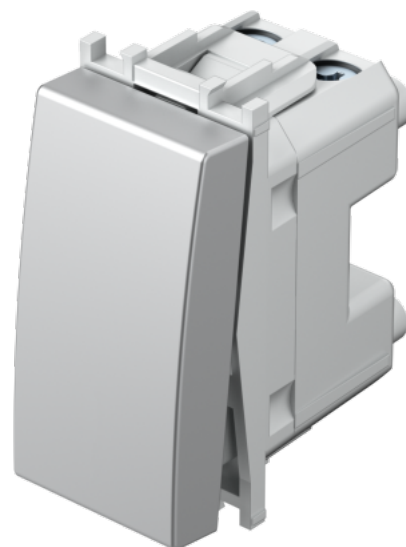
Product: SM11ES-U

Packaging quantity: 1 PCS

customs tariff number: 85365080

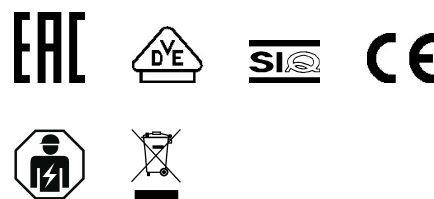
Product description:

- 16A 250V~, type SM11
- in accordance with EN 60669-1
- screw contacts 1.5-2.5 mm²
- replaceable button



ETIM EC class: EC000029 - Push-switch button

PROPERTY	VALUE
Nominal voltage	250 V
Assembly arrangement	Modular device for domestic switching devices
Method of operation	Push button
Colour	Silver
Model	Single push button
Halogen free	Yes
Connection type	Screwed terminal
Imprint	None
Rated current	16 A
Material quality	Thermoplastic
Number of poles	1
Material	Plastic
Type of fastening	Engage (snap)
RAL-number (similar)	9006
Suitable for degree of protection (IP)	IP20
Width of device	22.5 mm
Height of device	45 mm
Depth of device	38 mm



Legal information:

The company TEM Čatež d.o.o. reserves the right to change product features at any time and without prior notice. Data usage terms are available here: https://podpora.tem.si/en/pogoji_uporabe